

## Premium Preparation 1200 mm Worktop Cupboard with Upstand

ITEM # \_\_\_\_\_

MODEL # \_\_\_\_\_

NAME # \_\_\_\_\_

SIS # \_\_\_\_\_

AIA # \_\_\_\_\_



**133080 (TN1210EN)**

WorkTop Cupboard, with  
100mm upstand, 1 shelf and  
2 sliding doors, (4 feet),  
1200mm

### Short Form Specification

**Item No.** \_\_\_\_\_

The 50mm high worktop in 304 AISI stainless steel, 1,5mm in thickness, is sound-deadened and has anti-drip edges and welded corners. Inner welded frame in stainless steel. Under-top reinforcement in 304 AISI s/s. Integral rear upstand, h=100mm, with 10mm radius. Intermediate reinforced shelf in 304 AISI s/s that can be positioned at three different heights. Base shelf in 304 AISI s/s, 1mm in thickness, reinforced by 1,5mm support bars in AISI 304 s/s. Two sound-deadened sliding doors in 304 AISI s/s. Welded construction for maximum strength. Four 2"-feet in 304 AISI stainless steel, h=200mm, adjustable in height (-50+20mm).

### Main Features

- Worktop cupboard can be mounted on 125 mm diameter castors (2 with brakes) using the optional accessory kit.
- Handles in stainless steel for better hygiene and reliability.
- Sturdiness, stability and reliability of table accurately tested.

### Construction

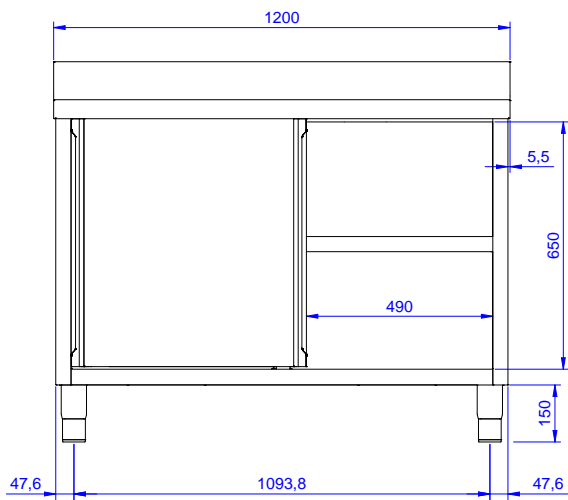
- Inner welded frame in stainless steel to guarantee superior strength and stability.
- Base panel has 40mm high profile, is 8/10 in thickness with upturned edges and bar reinforcement. It is welded to legs for further structure reinforcement.
- Base panel in AISI 304 stainless steel, 10/10 in thickness reinforced by 15/10 support bars in AISI 304.
- 100 mm upstand with 10 mm radiused corner and 13 mm deep, designed to be used against a wall.
- Intermediate shelf in stainless steel with riveted corners and trasversal reinforcement in stainless steel.
- Upstand back completely covered with Stainless Steel welded profile.
- Heavy duty construction entirely in AISI 304 stainless steel to offer maximum durability.
- 304 AISI stainless steel feet, 150 mm high and 54 mm in diameter, adjustable by -35/+25 mm.

### Optional Accessories

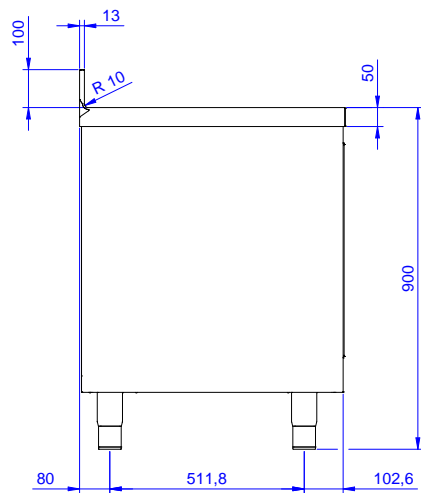
- Wheel kit for cupboards, 4 wheels (2 with brakes), D=1000 mm PNC 855299 ☐

**APPROVAL:** \_\_\_\_\_

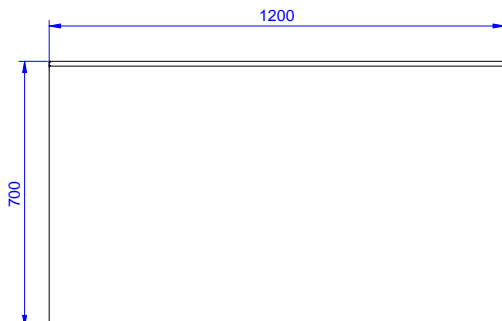
Front



Side



Top





**Electrolux**  
PROFESSIONAL

## Premium Preparation 1200 mm Worktop Cupboard with Upstand

### Key Information:

|                                 |           |
|---------------------------------|-----------|
| Cabinet width:                  |           |
| 133080 (TN1210EN)               | 1145 mm   |
| Cabinet depth:                  | 645 mm    |
| Cabinet height:                 | 610 mm    |
| External dimensions,<br>Width:  | 1200 mm   |
| External dimensions,<br>Depth:  | 700 mm    |
| External dimensions,<br>Height: | 1000 mm   |
| Upstand Dimensions,<br>Height:  | 100 mm    |
| Upstand Dimensions,<br>Depth:   | 13 mm     |
| Upstand Dimensions,<br>Radius:  | R=10      |
| Number and type of doors:       | 2 Sliding |
| Worktop thickness:              | 50 mm     |
| Net weight:                     | 55 kg     |



Premium Preparation  
1200 mm Worktop Cupboard with Upstand

The company reserves the right to make modifications to the products  
without prior notice. All information correct at time of printing.

2025.06.30